

## QuaCell® CHO CD04 Medium

### K1's best partner

Serum-free, animal origin free, chemically defined

---

- Specially formulated for CHO-K1
  - Wide adaptability, suitable for K1, K1-SV, CHO-S, etc.
  - Good compatibility, can be used with a variety of mainstream feeds
  - Rapid proliferation, support high-density culture, doubling time 16-24h
  - Seamless connection, no acclimation process, direct subculture
- 



## QuaCell® CHO Feed02 Supplement

### Protein boosters

Serum-free, animal origin free, chemically defined

---

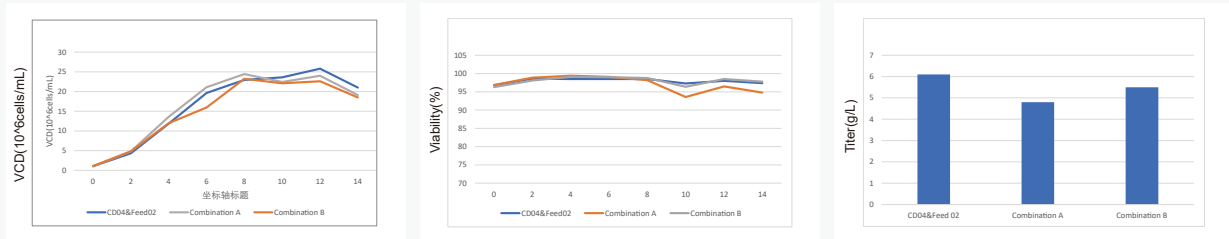
- Nutrient-rich support for high-density cell culture
  - Wide adaptability, suitable for K1, K1-SV, CHO-S, etc.
  - The high expression level promotes the continuous growth of the yield in the later stage of culture
  - Maintains cell viability in late culture
  - Flexible collocation, two-component design facilitates strategy optimization
- 



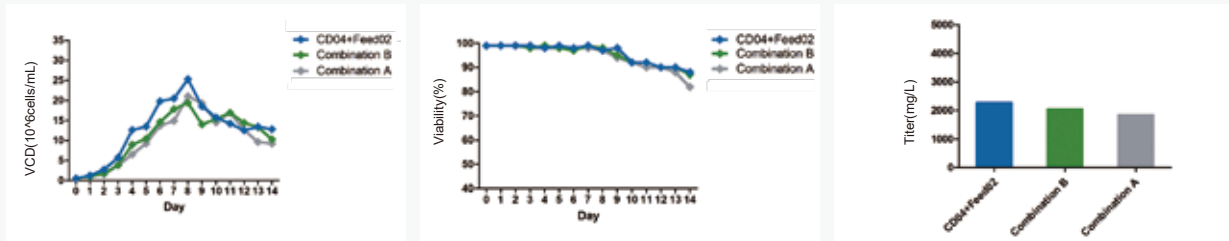
## QuaCell® CHO CD04 + QuaCell® CHO Feed02

### Gold combination

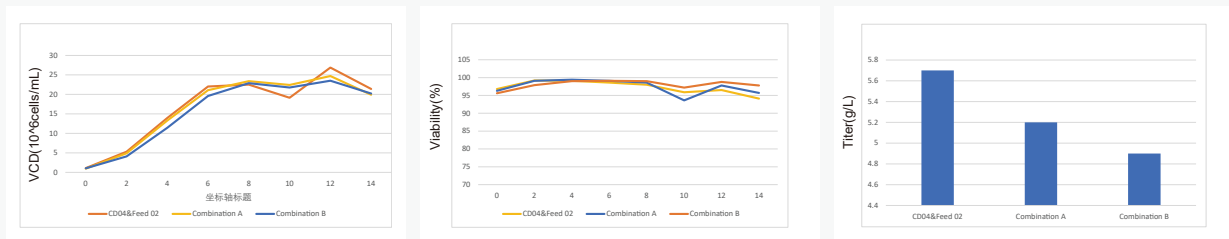
#### ▶ K1



#### ▶ CHO-S

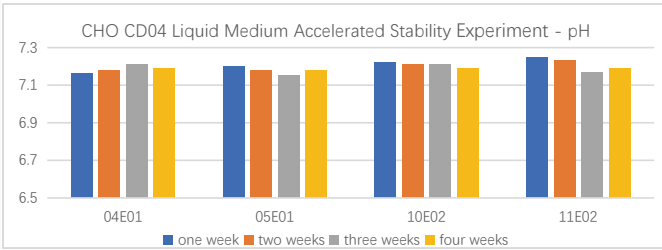


#### ▶ K1-SV



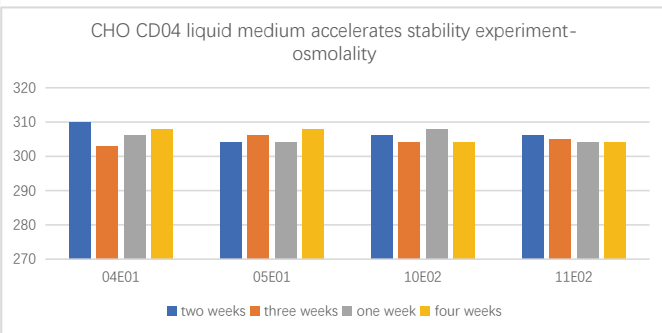
Picture1.

Picture1: The three cell lines were cultured with Fed-batch in CD04 medium /Feed02 supplement and other commercial medium, CD04 and Feed02 had the highest expression.



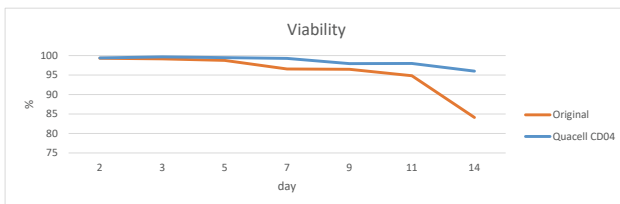
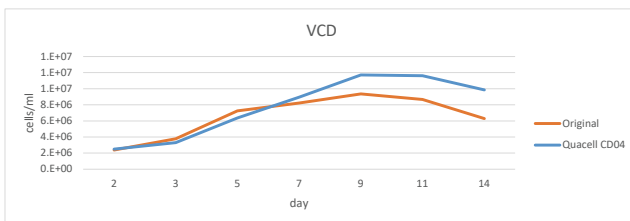
Picture2.

Picture2: The pH range of CHO CD04 liquid medium is 6.80-7.20, and in the accelerated stability experiment of CHO CD04 liquid medium of the same batch, the pH fluctuation is  $\pm 0.04$ , the fluctuation ratio is 0.5%, and the pH fluctuation of different batches is  $\pm 0.09$ , the fluctuation ratio is about 1.2%



Picture3.

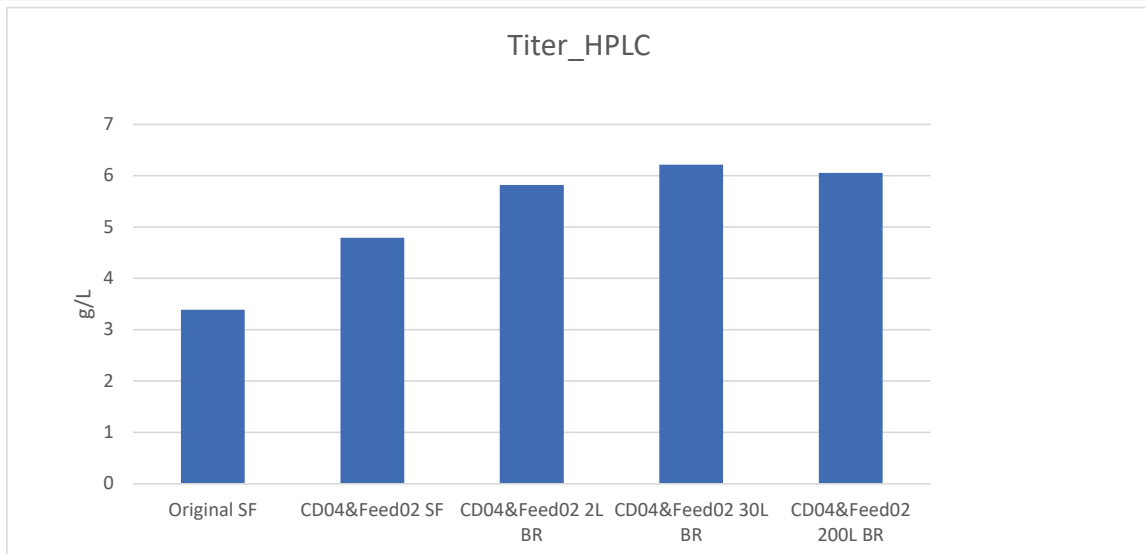
Picture3: The osmolality range of CHO CD04 liquid medium is 275-325mOsm, and in the accelerated stability experiment of CHO CD04 liquid medium of the same batch, the osmolality fluctuation was  $\pm 4$ , the fluctuation ratio was 1.3%, and the osmolality fluctuation of different batches was  $\pm 7$ , the fluctuation ratio was about 2.3%



Picture4.

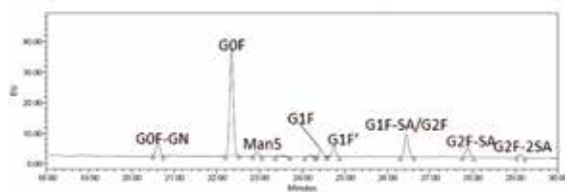
## Case Study 1: IgG project on K1 SV

Picture4: Clinical project, CD04 medium /Feed02 Supplement feed was used to replace the imported medium.

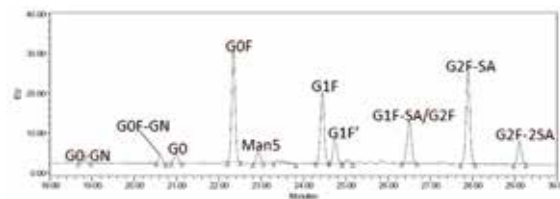


Picture5.

Picture5: Comparing the titer in the process scaling-up, The titer in CD04 medium /Feed02 Supplement was increased by 120%-150%, which was stable in the process of amplification.



Original



CD04+Feed02

Picture 6.

Picture 6: Compared with glycoform, CD04 medium /Feed02 Supplement can obtain more target glycoform.

## Ordering Information


Production	Cat.No.	Amount	Formulation
QuaCell® CHO CD04 Medium	A11004	1000mL	Liquid
	A12004	10L/100L/Customized	Powder
QuaCell® CHO Feed02 Supplement	A11902	Set	Liquid
QuaCell® CHO Feed02A Supplement	A12902A	3L/10L/Customized	Powder
QuaCell® CHO FeedB02 Supplement	A12952	300mL/3L/Customized	Powder





WEB


---

 <http://www.quacell.com/>

 Quacell Biotechnology, Co., Ltd.,

 5F, Building 3, No. 6, Shennong Road,  
Torch Development Zone, Zhongshan, China

 [info@quacell.com](mailto:info@quacell.com)

 400-902-0506